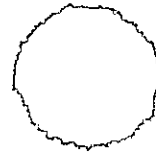


HISTORY



Planning for the gym began in 1950, led by Mr. John Etheredge who was principal at the time. Construction began in 1951 and was completed in 1952. The project was financed totally by the people of the community through various fund raisers. There were numerous barbeques, cake walks, etc. A large part of the money came from the sale of advertisements to businesses in the area. The ads were painted on the end walls of the gym. These ads were sold for \$50 to \$500 each. Also people in the community donated saw logs which were sawed into lumber or swapped for lumber.

Play began in the gym in the fall of 1952 (the 1953 annual shows team pictures in the gym). There was no 1952 annual; that was the transition year from eleven to twelve years in high school. Pete Haman graduated that year and he says they played outside in the spring of 1952.

The gym was used by the high school through the 1960 class which was the last class before the school was merged into the county system. After the high school consolidation, the gym was used by the middle school until it too was closed down.

The gym remained in limbo until a group called the Sumner Recreation Association started using it. They were active for a number of years until interest waned. After that the gym fell into disuse and was heavily vandalized. At this point no one seemed to realize who owned it.

In 1984 a group of local guys started using the gym. They incorporated under the name of Sumner Gym Inc. and petitioned the Worth County Board of Education to sign over a quit claim deed for the gym and property to the Sumner Gym Inc. which they did. Although the building itself was built entirely by private funds, it was built on property owned by the Board of Education.. The quit claim deed transferred the property to the Sumner Gym Inc.

The original 1984 group has gotten too old to play. A church league group uses the gym now.

The Sumner Gym Inc. is a duly organized corporation with a set of officers and directors. Bill Hatcher is president and Ralph Willis Jr is secretary and treasurer.

Facility wise the building is in fair shape, a new roof was put on about 10 years ago and new bathrooms were added in 2007. The floor is still sound, it just needs refinishing.

Financially, the gym received \$190 in fees from the church league. The main support comes from donations from you, the School Alumni Reunion group. Annual expenses for the gym came to \$342 (\$199 for lights, \$113 for taxes and \$30 registration fee). Water The balance on hand is \$600.26. Your continued support is needed if we are to hold onto the gym and keep it operating.

The future of the gym is cloudy, all of us are getting up in age and we need to decide if we want to hold on to the gym or deed it to some community organization.

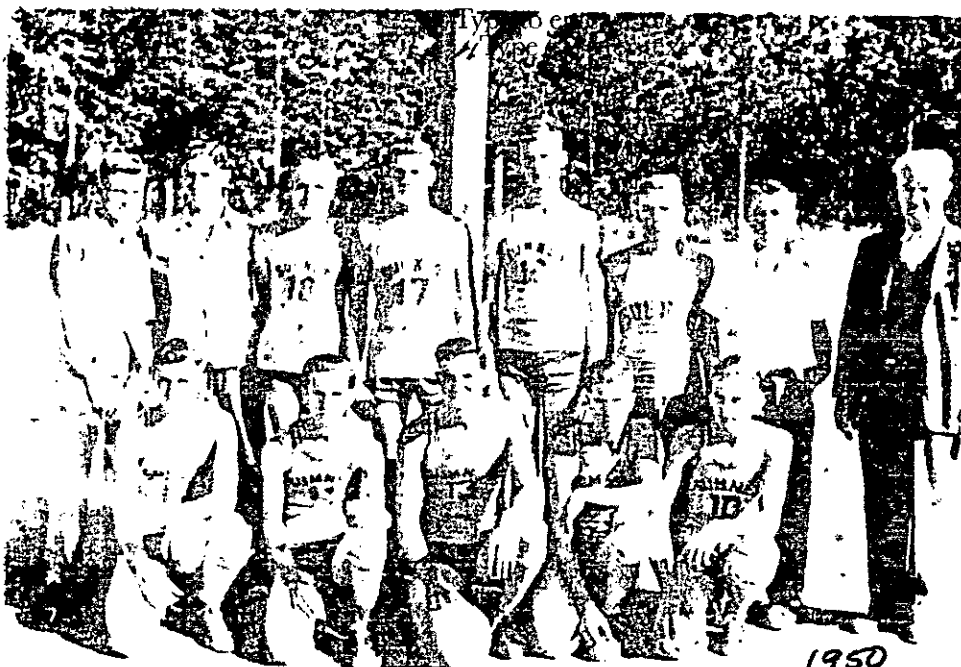
Thanks to our parents and businesses in the community through their concern and dedication, we all have lots of memories connected with the gym and basketball. It was fun.

Thanks for your continued support.

Bill Hatcher

BASKETBALL 1950

GIRLS TEAM MISS KING, COACH
 CROSS, WATSON, MOORE, JOLLY,
 GRAY, JENKINS, DEES,
 THOMPSON
 SECOND ROW FORSHEE,
 MANAGER
 YOUNG, YOUNG, HOWELL, GRAY,
 WEBB

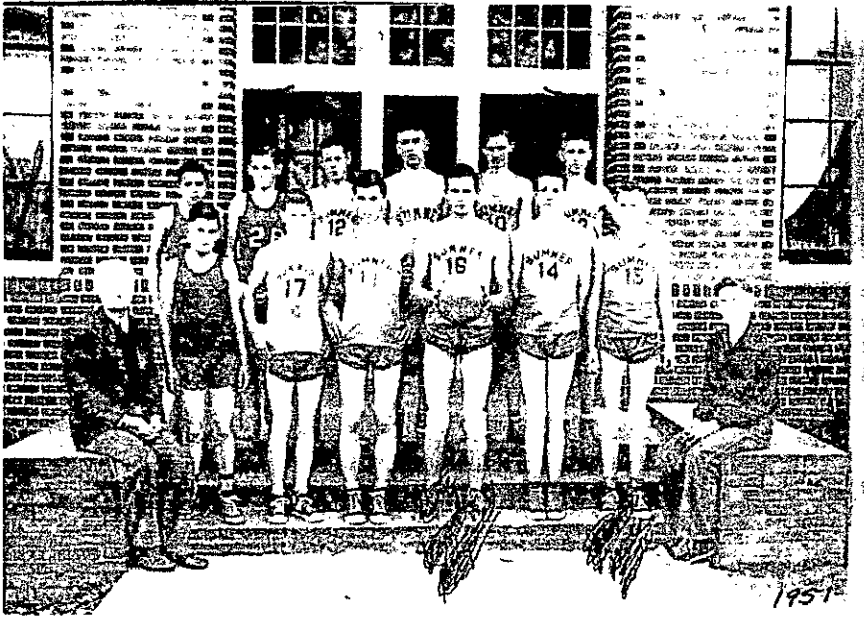


BOYS TEAM FRONT ROW
 RIVERS, JOLLY, WILLIS, WILLIS,
 ANDERSON, MR. JOHN
 ETHEREDGE COACH
 SECOND ROW BRIDGES, NELMS,
 WILLIS, TOMPKINS, FORSHEE,
 MITCHELL, MOREY

CHEERLEADERS HOBBY, SUMNER,
 WILLIS, WILLIAMS, LAWHORNE,
 JENKINS



BASKETBALL 1951



BOYS' BASKETBALL SQUAD

GIRLS' BASKETBALL SQUAD



BASKETBALL 1952

NO ANNUAL

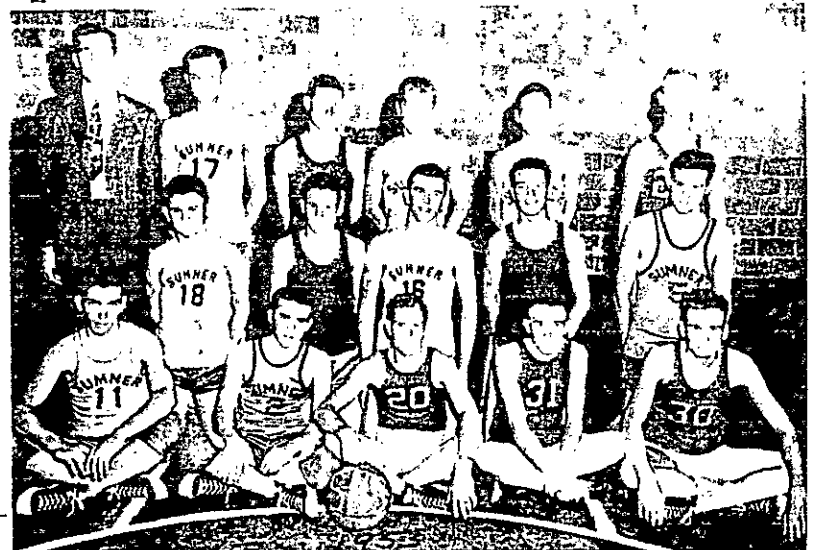
BASKETBALL 1953



FRONT ROW BRYANT, HOWELL, PATTERSON,
WILLIS, JOLLY, WHIDDON

SECOND ROW TOMBERLIN, WILKERSON,
TRAMMELL, HOLTON, MCKELLAR, SNIPES

CHEERLEADERS WILKERSON, TRAMMELL,
REGISTER, POWELL, SUMNER, COX,
LAWHORNE, JENKINS



BOYS TEAM FIRST ROW HOUSE, YOUNG,
CAUSEY, SUMNER, ADAMS
SECOND ROW BENSON, WATSON,
TRAMMELL, TESNEY, POWELL
THIRD ROW MR M C HARRISON SAULS,
YOUNG, SIKES, MCKELLAR, MATTHEWS

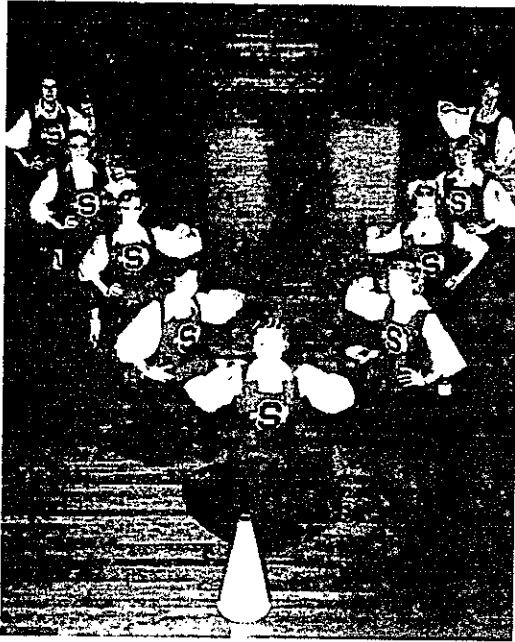


BASKETBALL 1954

NEED PICTURES

BASKETBALL

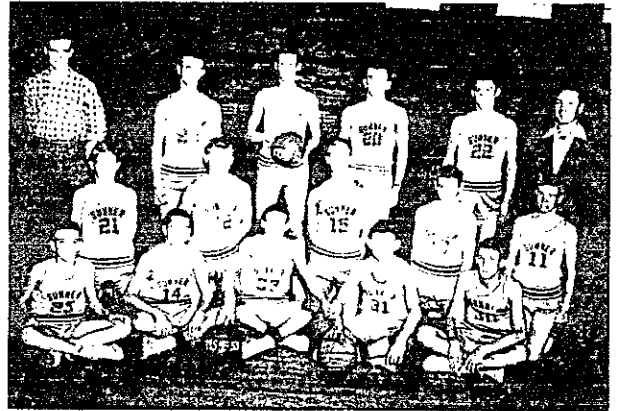
1955



CHEERLEADERS ROUSE, SUMNER, MCCRARY, PATTERSON, SUTTON, WILKERSON, SNIPES, REGISTER



1955
First Row: Vivian Greene; Lillian Bryant; Earleen Wilkerson, Captain; Lilly McKellar, Co-Captain; Geraldine Booth; Shirley Jean Gray; Second Row: Betty Chapman; Merle Gray; Rachel Young; Dolly McKellar; Margaret Griffin; Gloria Rivers; Standing: Mary Ellen Hobby, Manager; Margaret Howell; Grace Faulk; Merlene Bankston; Merle Young; Mr. William H. Bibby, Coach.



First Row: Hal Trammell; Falt Willis; Joe McKellar, Co-Captain; Grady Benson; Billy Joe Davis; Second Row: Derrrell McCrary; Bobby Sikes; Wendell Mathews; Mack Anderson; Cubert Causey; Third Row: Billy Griffin, Manager; Herman Mathews; Tommy Watson, Captain; Bobby Trammell; Wallace Dees; Mr. Wm. Bibby, Coach.

SUMNER HIGH SCHOOL

BASKETBALL SCHEDULE

1954-1955

All Home Games Begin at 7:30

Oct. 22—Warwick	There	Dec. 14—Ashburn	There
Oct. 26—Doerun	There	Jan. 4—Sylvester	Here
Oct. 28—Ashburn	There	Jan. 7—Norman Park	There
Nov. 2—Warwick	Here	Jan. 11—Whigham	Here
Nov. 5—Sale City	There	Jan. 14—Sale City	Here
Nov. 8—Norman Park	Here	Jan. 18—Quitman	There
Nov. 12—Doerun	Here	Jan. 25—Omega	Here
Nov. 16—Whigham	There	Feb. 1—Quitman	Here
Nov. 19—Omega	There	Feb. 8—Sycamore	There
Nov. 23—Sycamore	Here	Feb. 11—Cordele	There
Nov. 24—Pelham	Here	*B Team also	
Dec. 3—Cordele	Here	Coach: Wm. H. Bibby	
Dec. 7—Sylvester	There	Jacksonville State Teachers Col- lege, Jacksonville, Ala.	



BASKETBALL 1956

NEED PICTURES

BASKETBALL 1957



First row: Betty Chapman, Co-captain, Geraldine Booth, Ann Boynton, Barbara Massey, Rachel Young. Second row: Ann Burdett, Glenda Cook, Elaine Sumner, Lily McKellar, Co-captain, Merle Gray. Third row: Loyce Tompkins, manager, Grace Paulk, Peggy Mathews, Laverne Barrett, Lois Sledge, Jess Davis, Mrs. Smith.



Cheerleaders

Sherry Holton, Mascot; Judy Powell, Martha Nell Adams, Lorena Edwards, Betty Williams, and pictured are Loretta Slappey, Ella Gunn, and Glennis Walker, Head Cheerleader.



First row: Jack Souter, Bobby Souter, Robert Sledge, Jim Alexander. Second row: Derrell McCrary, Garlon Booth, Lamon Gunn, Franklin Hamon. Third row: Jimmy Snipes, Billy Hatcher, Randall Glover, Melvin Gill, Co-captain; Franklin Cook, co-captain, and Mr. Smith, Coach.

BASKETBALL 1958

BOOTH, PAULK, SHINHOLSER,
HAMAN, HATCHER, COOK, GREEN,
ALEXANDER, SOUTER, CATO,
MCDONALD, MCCRARY, MCDONALD,
SHEPHERD, MCCRARY



Type to enter text
FIRST ROW : DAVIS,
PAULK, ADAMS, WALKER, SECOND
ROW: TRAMMELL, HOWELL,
SLAPPEY, NOT PICTURED
POWELL



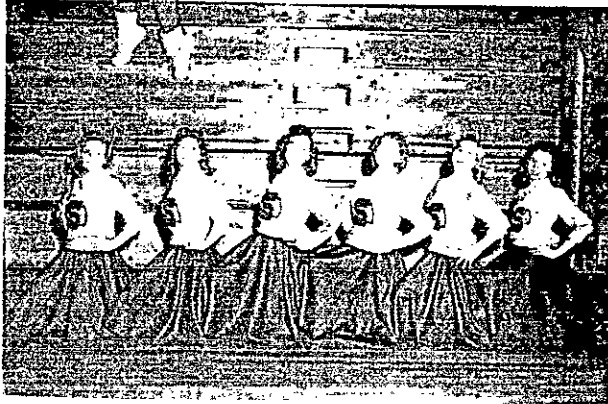
GRAY, MATTHEWS, SOUTER,
CARTER, DAVIS, ROUSE,
SINCLAIR, WHIDDON, COOK,
DAVIS, TOMPKINS, CHAPMAN,
BANKSTON

BASKETBALL

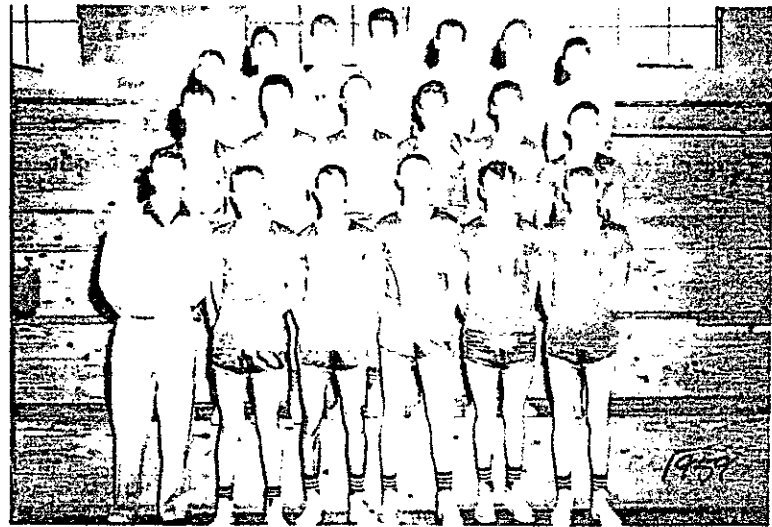
1959



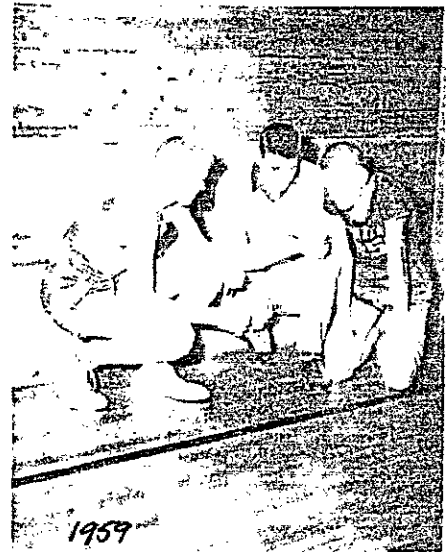
LARLETA DAVIS, Captain
 JOYCE WILLIS
 DEVORAH HAZEN
 SUE DAVIS
 MARY ANN GLENN
 DELAYNE SOUTER
 1959



1959



1959



BILLY HATCHER
 Captain
 COACH BICE
 MACK SUTTON
 Alternate Captain

1959



GLENDIA COOK
 COACH BICE
 WILLA SOUTER

